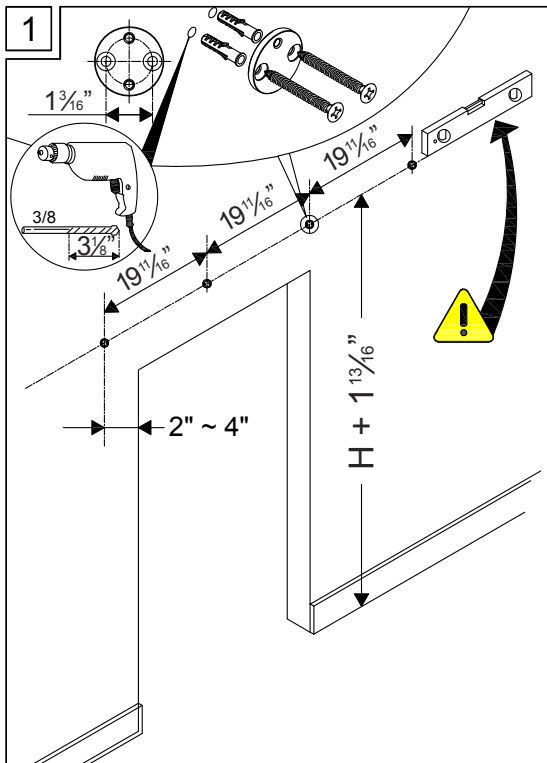
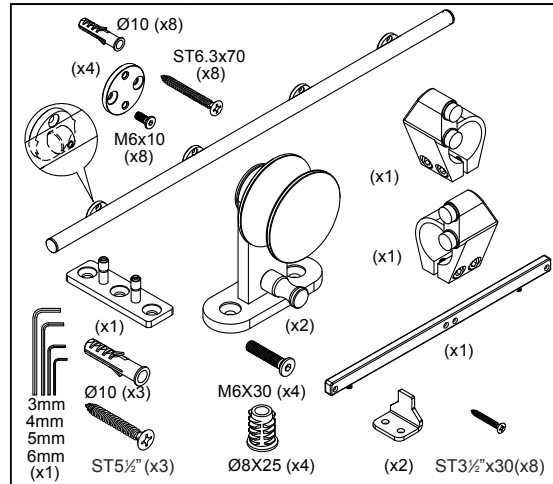
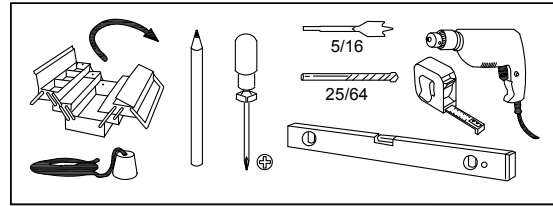
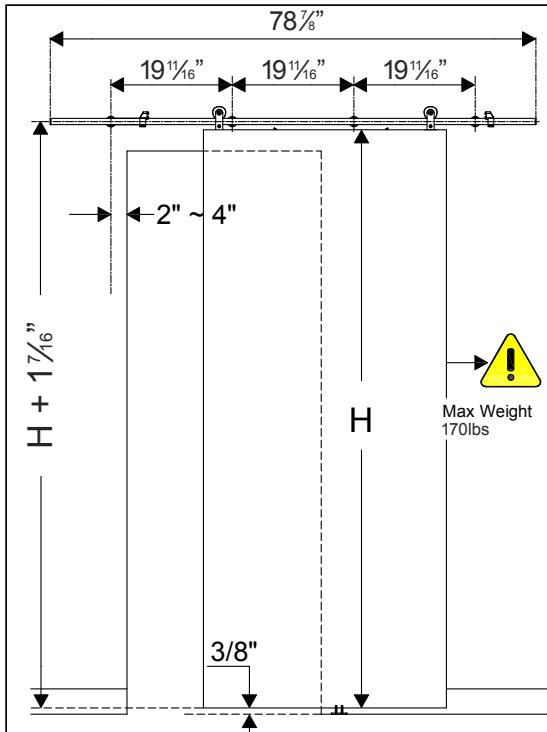


BD5A79630 79"

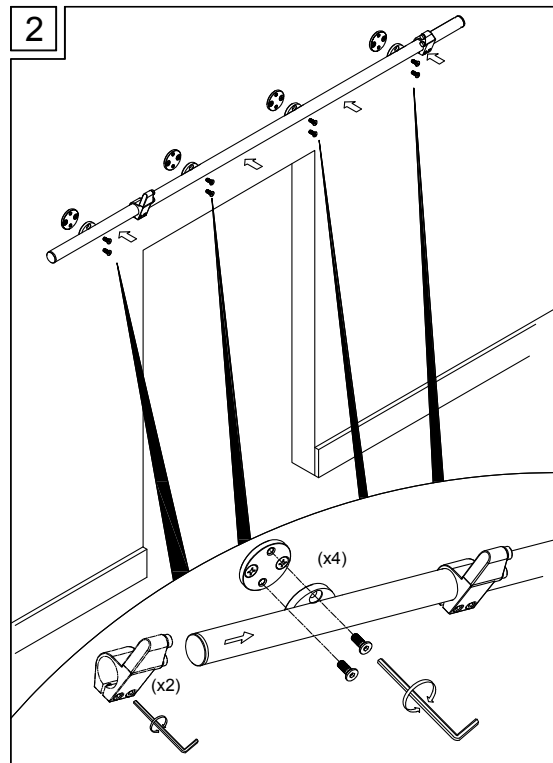
Installation Manual

Read Entire Instructions Before Beginning



1. The closed door is centered on the opening. Determine door overlap on leading edge of door. Door overlap should be at least 2" on floor guide side.

Measure/mark locations of rail mounting posts on wall using dimensions and formulas shown below. Ensure mounting holes are LEVEL. Drill holes, fasten rail mounting discs to wall.



2. Fasten rail to mounting discs and install door stops over ends of rail. Rail Foot Adjustment Mounting feet on rail are adjustable. Loosening screw on back of foot allows for rotational and side to side adjustment for alignment with wall mounted discs.

3. Remove anti-jump pin from back of each truck. Mark/route/drill top of door panel for truck (x2). Secure truck with anchors as shown.
4. Route channel in bottom of door to act as a track for the floor guide.
5. Locate floor guide on finished floor. Guide is located flush with edge of opening and $1\frac{5}{8}$ " from wall to centerline.
6. Place door on track, and adjust position of door stops for open and closed positions
7. Re-install anti-jump pins.

