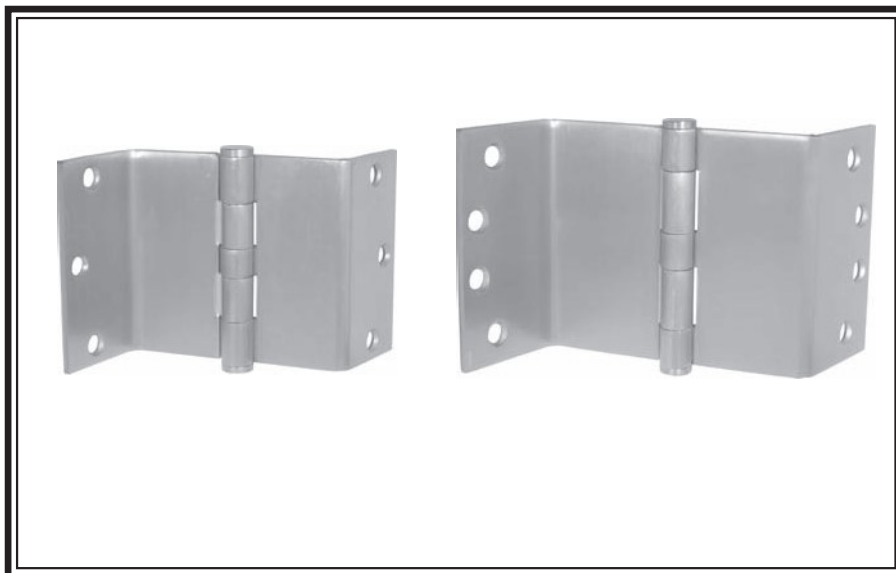




SWING CLEAR FULL MORTISE TEMPLATE PLAIN BEARING

STANDARD WEIGHT
3 1/2" - 4"



SCP81 (ANSI A8123)
Steel-Polished and Plated or Bonderized and Prime Coated for Painting.

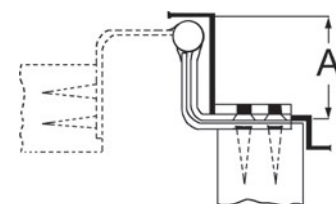
SCP51 (ANSI A5123)
Stainless Steel-Polished and Satin Finish



- Designed to swing doors completely clear of the opening when door is opened 95° door projects 3/32" past stop of jamb.
- All swing clear hinges are made for reversible applications.
- For hospital type, add HT to suffix of part number.
- For use on medium weight doors requiring low frequency service.
- Recommended for 34" x 7'0" x 1-3/8" door not to exceed 80 lbs.
- All hinges are ANSI template.

GENERAL PRODUCT INFORMATION: PBB, Inc. template hinges are manufactured to close tolerances and meet all specifications and requirements set by the American National Standards Institute (ANSI).

For use in hospitals, institutional or commercial type buildings for barrier-free environment. Wherever doors are required to meet barrier-free codes (ADA) or are required to swing completely clear of the openings so that wide equipment can pass through without damaging doors, frames or equipment, reducing opening maintenance.



OTHER SPECIFICATIONS:

Height of hinge:	+ .000	
	3.50 - .015	for 3-1/2"
	+ .000	
	4.00 - .015	for 4"
Width:	3.50 ± .015	for 3-1/2"
	4.00 ± .015	for 4"

Minimum Clearance Required
 Dimension "A" (inches) 2-1/8" for 3-1/2"
 2-1/2" for 4"



MATERIAL GAUGE:

.123 ± .005 for 3-1/2"
 .130 ± .005 for 4"

3-1/2" STANDARD SCREW SIZE
FHMS - 10-24 x 1/2" FHWS - 10 x 1"

4" STANDARD SCREW SIZE
FHMS - 12-24 x 1/2" FHWS - 12 x 1-1/4"

PACKAGING INFORMATION:

One hinge per plastic bag, 3 hinges and 1 screw pack per unit carton.
 12 unit carton or 36 hinges per master shipping carton.
 1 screw pack includes all machine screws (24), and 1/2 wood screws (12). ATMS & AWS also available.
 For 3-1/2 x 3-1/2, 1 screw pack includes (18) machine screws and (18) wood screws.